

# Low Pressure Second Stage Regulators - Special Settings

## LV5503H Series

### Application

Designed to reduce first stage pressure of 5 to 20 PSIG down to burner pressure, normally 11" w.c. Ideal for larger commercial and industrial applications, multiple cylinder installations and large domestic systems.



### Features

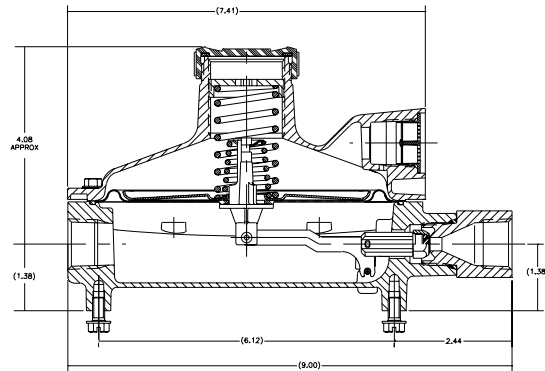
- Incorporates integral relief valve.
- With 15 PSIG inlet pressure, regulator is designed to not pass more than 2 PSIG with the seat disc removed.
- Replaceable valve orifice and valve seat disc.
- Straight line valve closure saves wear on seat disc and orifice.
- Built in pressure tap has plugged 1/8" F.NPT outlet. Plug can be removed with a 3/16" hex allen wrench.
- Large bonnet vent profile minimizes vent freeze over when properly installed.
- Extra long lever arm for uniform delivery pressure.
- Large diaphragm is extra sensitive to pressure changes.



**LV5503H Series**

### Materials

Body ..... Die Cast Aluminum  
 Bonnet ..... Die Cast Aluminum  
 Nozzle Orifice ..... Brass  
 Spring ..... Steel  
 Valve Seat Disc ..... Resilient Rubber  
 Diaphragm ..... Integrated Fabric and Synthetic Rubber



### Ordering Information

Part Number	Inlet Connection	Outlet Connection	Orifice Size	Factory Delivery Pressure @ 10 PSIG Inlet	Adjustment Range Inches w.c.	Bonnet Vent Position	Vapor Capacity BTU/hr.* Propane	
LV5503H414	1/2" F. NPT	3/4" F. NPT	1/4"	14" w.c.	7-16	Inlet	1,600,000	
LV5503H614				20" w.c.	11-28			Outlet
LV5503H620				40" w.c.	28-84	Inlet		
LV5503H620V				14" w.c.	7-16			Outlet
LV5503H640				20" w.c.	11-28			
LV5503H640V				40" w.c.	28-84			
LV5503H814		3/4" F. NPT	1" F. NPT	9/32"	14" w.c.	7-16	Inlet	2,300,000
LV5503H820					20" w.c.	11-28		
LV5503H840					40" w.c.	28-84		

Maximum flow is based on 10 PSIG inlet 20% drop in delivery pressure (5/1/08)